

- Project Gallery**
- ASU
 - Austin
 - Bellagio
 - BIA
 - BWI
 - Carroll Creek
 - Community Hospital
 - Delaware Water Gap
 - Ft. Lauderdale
 - GTECH Center
 - Hahn Loeser
 - HIA
 - High Alma
 - Louis Vuitton
 - McGowan
 - MUSC - Phase I
 - New World of Coca-Cola
 - Planet Hollywood Theatre
 - Reservoir Woods
 - Scion
 - Southeast Regional
 - Strathmore
 - T-GEN
 - University of Arizona
 - Urban Outfitters
 - U.S. Naval Academy
 - Westfield
 - Wichcraft
 - Winnipeg Airport Parkade

COMMUNITY HOSPITAL



[View printable version \(PDF\)](#)

System: Façade
Attachment Method: Eclipse
Metal Fabric Pattern: Scale

Project: Community Hospital North-Parking Garage
Location: Indianapolis, IN
Architect: RTKL-Dallas, TX
Facility Owner: Community Health Network
Contractor/Fabricator/Installer: Pro-Clad-Indianapolis, IN
Facility End Use: Parking Garage
Renovation or New Construction: New Construction
Completion Date: November 2006

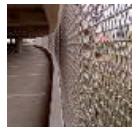
Project Details: Cambridge Architectural, America's leading manufacturer of architectural mesh systems, recently constructed a unique Façade mesh system for a new six-level parking garage structure, part of a \$200 million expansion of Community Hospital North, Indianapolis, IN. The mesh system achieves beauty, function and economy – a perfect solution for the project's design requirements. "Located at the entrance to the hospital, and visible from the interstate, the parking garage design required a unique, aesthetically attractive exterior building material," explains Mark Hayden, project manager, Community Health Network. "But we needed a product that would also offer ventilation, fall protection and security. Cambridge Architectural's mesh system exceeded our requirements and our expectations." "Cambridge Architectural Façade systems provide solutions for aesthetic and functional design obstacles such as these," says David Merriman, manager of marketing and business development for Cambridge Architectural. "Our mesh system met all of the project's requirements and provides a new dimension as a functional design element. "Metal fabric in Cambridge's Scale pattern, supported by Eclipse attachment hardware, created the 60-ft. tall by 15-ft. wide panels which visually differentiate the building exterior. "Unattractive parking ramps and openings are virtually disguised, creating an interesting form of glimmering mesh," describes Jim Johnson, project manager, RTKL, Dallas, TX. "At night, the structure's exterior lighting illuminates the mesh. During the day, the metal fabric allows sunlight to pass into the parking garage, while creating varying shades of shimmer on the material." The metal fabric pattern meets ventilation requirements for parking garages, allowing proper airflow and significantly reducing the need for costly exhaust systems. The metal fabric also meets fall protection requirements and, when used with crash barriers, eliminates the added cost of handrails. The attachment hardware was designed to keep an aesthetic focus on the metal fabric and requires far fewer structurally embedded supports than its heavier, panelized alternatives. "Cambridge's

FEATURED PROJECTS

View Systems, Attachment Methods, Metal Fabric Patterns and a Gallery of Projects

Click on a picture below to change main photo.

Mesh Photo



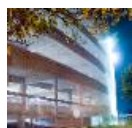
Metal Fabric by Cambridge Architectural

Attachment Photo



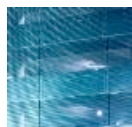
Metal Fabric Attachment Hardware by Cambridge Arch

Photo #1



Parking Garage Façade

Photo #2



Illuminated Tension System

Photo #3



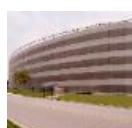
Metal Fabric Tensile Structure

Photo #4



Metal Ventilation System

Main Photo



system was cost-effective because the mesh provided a human fall-restraint, eliminating the need of extra handrails," comments Blake Hodge, principal, Carl Walker Inc., Indianapolis, IN. "The open area of the mesh met requirements to classify the garage as open – allowing us to use a less costly fire suppression system than one required for an enclosed garage." "Compared to other mesh manufacturers, Cambridge was more economical and offered the solutions we were looking for," adds Johnson. "The mesh created visual interest to an otherwise mundane parking garage and is a unique product not seen everyday." This intricately woven metal is becoming a hot trend in the architectural community because of its aesthetic beauty and the limitless functional characteristics it presents, continues Merriman. "The ease of combining aesthetics and functionality make architectural mesh systems uniquely attractive to architects and designers." "Across the country I've noticed mesh becoming part of an architectural movement in garage design," continues Hodge. "And working with Cambridge offered many benefits. They simply didn't sell us the mesh – they offered a complete engineered, turn-key system." The complete 850,000 square foot expansion will effectively double the size of the hospital facility and includes a six-story patient tower, a five-story professional office building and the six-level parking structure. The project also includes expanding and renovating 140,000 square feet of the existing hospital. This significant expansion will transform a community hospital into a full service urban medical complex. Construction of the complex began in November 2004 and is scheduled for completion in early 2007. The parking garage portion of construction is complete and will be operational before the end of the year. A pedestrian walkway will also connect the garage to the hospital. The project team includes architectural firm RTKL, Dallas, TX, general contractor Summit Construction, Louisville, KY, mesh installer Pro Clad, Indianapolis, IN, and parking consultant Carl Walker Inc., Indianapolis, IN. The building owner is Community Health Network. Cambridge maintains a fully-staffed engineering department to assist with installation details, framing design, and load characteristics, and is also available for on-site installation supervision. "We specialize in the installation of metal exteriors but this was our first mesh installation," explains Steve Miller, project manager, Pro Clad, Indianapolis, IN. "With Cambridge's on-site assistance, we worked through the minor challenges we encountered and the result is a functional and beautiful metal exterior." Cambridge's Scale metal fabric pattern features large-scaled, flexible open weaves that shade and screen structures including facades, parking garages and pavilions. Eclipse tension attachment hardware was used to install the Scale product. Tailored edges are provided for expanses of flexible metal fabric in tension. Elegant, custom cut apertures receive the metal fabric ends in tubing that is integrated into a bracket and structural support design. Tube sizes may vary to emphasize or de-emphasize the attachment.