

**Project Gallery**

- 116 University Avenue
- 1330 7th Street
- Arizona State University
- Austin Convention Center
- BART
- Bellagio
- Bush International Airport
- BWI Airport Terminal
- Carroll Creek Bridge
- Cedar City Public Library
- Central Christian Church
- Comcast Center
- Community Hospital
- Delaware Water Gap
- Fashion Industry Gallery
- Ft. Lauderdale Rental Car
- Frog and Peach
- GTECH Center
- Hahn Loeser
- Harrisburg International
- High Alma
- Home Depot Parking
- Howard Community
- JW Tavern
- Louis Vuitton
- McGowan
- MUSC - Phase I
- New World of Coca-Cola
- Newseum
- Olympic West
- Planet Hollywood Theatre
- Quilt Museum
- Rabb Residence
- Reservoir Woods
- [Santa Monica Civic Center](#)
- Scion
- Southeast Regional
- Strathmore Music Center
- T-GEN Institute
- University of Arizona
- University of Washington
- Urban Outfitters
- U.S. Naval Academy
- Western Washington
- Westfield Century City
- Westfield Parking Garage
- Wichcraft
- Winnipeg Airport Parkade

# SANTA MONICA CIVIC CENTER



**System:** Parkade  
**Attachment Method:** J-Hook  
**Metal Fabric Pattern:** Balance

**Project:** Santa Monica Civic Center Parking Garage  
**Location:** Santa Monica, CA  
**Architect:** Moore Ruble Yudell Architects and Planners, Santa Monica, CA  
**Facility End Use:** Parking Garage  
**Completion Date:** January 2008  
**Renovation or New Construction:** New Construction

**Project Details:** The 900-space Santa Monica Civic Center garage was designed not only to visually inspire but to meet or exceed many of the USGBC's LEED® guidelines. The structure employs various sustainable design and construction practices, materials and products – including Cambridge's architectural mesh – culminating in the nations first LEED certified parking facility.

The Parkade system was fabricated with mesh in Cambridge's Balance pattern, which features large-scaled, flexible open weaves that shade and screen structures.

Cambridge's J-Hook tension attachment hardware was used to install the Balance product. This is a simple attachment of flexible metal fabric to structural supports view J-Hooks. The clearly articulated connection requires a rod that is threaded through the metal at top and bottom edges. The J-Hook hardware is appropriate for lengths of metal mesh held in tension up to 15-20 feet.

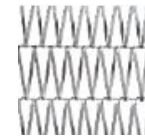
The impressive versatility of architectural mesh made it a perfect building element for the Santa Monica Civic Center parking garage. Its recyclable nature, along with its unique aesthetic and unmatched durability made it a fitting material for welcoming guests to the

**FEATURED PROJECTS**

View Systems, Attachment Methods, Metal Fabric Patterns and a Gallery of Projects

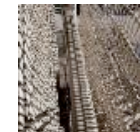
Click on a picture below to change main photo.

**Mesh Photo**



Balance Metal Fabric

**Attachment Photo**



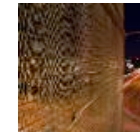
J-Hook Attachment Hardware

**Photo #1**



Metal Fabric Parkade System

**Photo #2**



Balance Metal Fabric

**Main Photo**



Parking Garage Façade

OPEN TO YOUR

IDEAS



PRESENTATION

aesthetic and unmatched durability made it a fitting material for welcoming guests to the Civic Center.

---

105 Goodwill Rd, Cambridge, MD 21613 | Toll free: 866-806-2385 | Fax: 410-901-4979 | [Subscribe to our E-Newsletter](#) | [sales@cambridgearchitectural.com](mailto:sales@cambridgearchitectural.com) | [Site Map](#)

Copyright © 2009 Cambridge Architectural. All Rights Reserved.