

Project Gallery

- 116 University Avenue
- 1330 7th Street
- Arizona State University
- Austin Convention Center
- BART
- Bellagio
- Bush International Airport
- BWI Airport Terminal
- Carroll Creek Bridge
- Cedar City Public Library
- Central Christian Church
- Comcast Center
- Community Hospital
- Delaware Water Gap
- Fashion Industry Gallery
- Ft. Lauderdale Rental Car
- Frog and Peach
- GTECH Center
- Hahn Loeser
- Harrisburg International
- High Alma
- Home Depot Parking
- Howard Community
- JW Tavern
- Louis Vuitton
- McGowan
- MUSC - Phase I
- New World of Coca-Cola
- Newseum
- Olympic West
- Planet Hollywood Theatre
- Quilt Museum
- Rabb Residence
- Reservoir Woods
- Santa Monica Civic Center
- Scion
- Southeast Regional
- Strathmore Music Center
- T-GEN Institute
- University of Arizona
- University of Washington
- Urban Outfitters
- U.S. Naval Academy
- Western Washington
- Westfield Century City
- [Westfield Parking Garage](#)
- Wichcraft
- Winnipeg Airport Parkade

WESTFIELD PARKING GARAGE



System: Parkade
Attachment Method: Eclipse
Metal Fabric Pattern: Shade

Project: Westfield Parking Garage
Location: Roseville, CA
Architect: Stantec Architecture, Sacramento, CA
General Contractor: Overaa Construction, Richmond, CA
Facility End Use: Shopping Center
Completion Date: November 2008
Renovation or New Construction: New Construction

Project Details: The parking garage at the Westfield Galleria in Roseville, CA, sits prominently among the high-end shopping and entertainment complex, and can also be seen from the city's new conference center. Cambridge's Parkade architectural mesh system provides a striking façade without obstructing views or impeding airflow throughout the structure.

The functional, woven metal fabric draped facility features 4,300 sq. ft. of architectural mesh in the Shade pattern, which has a 43% open area. The chosen pattern covers but does not completely close off open areas of the building.

Cambridge's Eclipse tension attachment hardware was used to securely hold the Stripe metal fabric in place. Eclipse hardware is appropriate for lengths of metal fabric held in tension up to 100 feet.

Cambridge's metal fabric panels were specifically engineered to fit the structure's open areas, ensuring a successful and issue-free installation.

FEATURED PROJECTS

View Systems, Attachment Methods, Metal Fabric Patterns and a Gallery of Projects

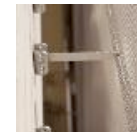
Click on a picture below to change main photo.

Mesh Photo



Shade Metal Fabric

Attachment Photo



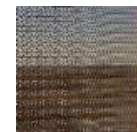
Eclipse Attachment Hardware

Photo #1



Parkade System

Photo #2



Shade Metal Fabric

Main Photo



Parking Garage Façade

OPEN TO YOUR

IDEAS



PRESENTATION

105 Goodwill Rd, Cambridge, MD 21613 | Toll free: 866-806-2385 | Fax: 410-901-4979 | [Subscribe to our E-Newsletter](#) | sales@cambridgearchitectural.com | [Site Map](#)

Copyright © 2009 Cambridge Architectural. All Rights Reserved.